

How to find details from existing records regarding former salaried officers & employees of the

South Australian Railways

1853 until 1993



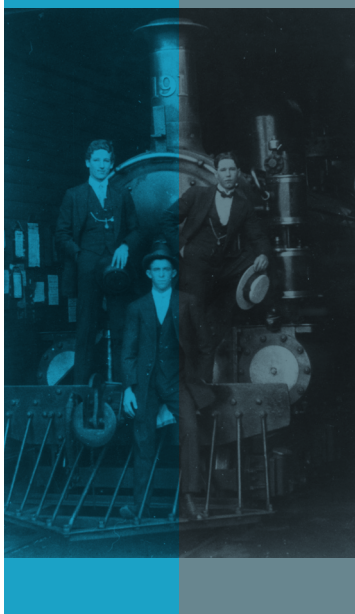
How to find details from existing records regarding former salaried officers & employees of the South Australian Railways

The Archives section of the National Railway Museum contains a significant collection of photographs pertaining to railway operations. It also contains documents that relate to the operational matters of the South Australian Railways, the Commonwealth Railways and the Australian National Railways. It does not hold records regarding the employment of Officers and Employees of the South Australian Railways and the Commonwealth Railways. This information can be obtained from other sources. To this end, the NRM has listed hereunder those organisations and the details that are held by them. It is hoped that this advice will assist in the successful pursuit of your enquiries.



1 South Australian Genealogy & Heraldry Society Inc
201 Unley Road, Unley
Telephone: 8272 4222
Contact: Marie Maddocks
Hours: Tuesday 10.30am to 9 pm
Wednesday - Thursday - Saturday 10.30 am to 4.30 pm

- 1.1 SAR Employment Records**
- April 1853 to 1912 in microfilm (including Index Book to Staff Records April 1853 to January 1913 - compiled by Robt W Farrant 1995 Reference State Records Office GRG 42/131 -- see Item 3.1)
 - 1876 to 1912 in microfilm (including Index Book - Employees Ledgers 1876 to 1912 compiled by L Page 1983 Reference State Records Office GRG 42/73 -- see Item 3.2)
 - SAR Employee Cards 1939 to 1943 in microfiche (Reference State Records Office GRS 1427/1 see Item 3.4)



2 State Library of South Australia
North Terrace Adelaide

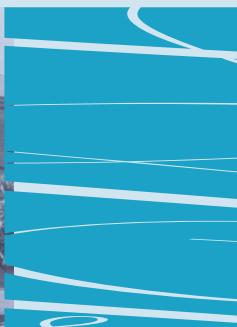
- 2.1 SAR Appointments 1898 to 1977**
 fh 385.0259423 N545
 John A Newell 2006
 Explanation:
 These appointments are taken from the SAR Weekly Notices. The Weekly Notice will give the call for the position (normally a few weeks prior to the appointment) and wages, cottage rent and if there is a doctor in the town. These records are not complete as after the First World War the returned soldiers took up their previous positions and the temporary occupant was transferred to another location. A similar position occurred after the Second World War. With retrenchments during the Depression employees were transferred to locations and these transfers were not published in the Weekly Notice.
- 2.2 South Australian Railways Ambulance Examinations**
 fh 385.6259423 N545
 John A Newell No Date
 Explanation:
 This is a list of ambulance examinations results obtained by SAR employees and were compiled from SAR Weekly Notices.
- 2.3 Around the System: List of names from South Australian Railways Institute Magazines & Australian National Railways Institute Magazines during the period 1947 to 1993.**
 fh 385.0259423 N545
 John A Newell No Date
- 2.4 South Australian Government Gazettes -- 1889 to 1943**
 Refer attached list of Government Gazettes.
 Explanation:
 A list of all employees and salaried officers was published in the Government Gazette from 1889 until 1943. The list was published pursuant to Section 28 of the South Australian Railways Commissioners Act No. 414 of 1887 & Section 36 of the South Australian Railways Commissioners Act No. 2303 of 1936.

**South Australian Government Gazette
List of Railway Employees
Published pursuant to Section 28
of the South Australian Railways Commissioners Act no. 414 of 1887**

Year	Volume	Page number
1889	2	1639
1890	2	1125
1891	2	788
1892	2	1095
1893	2	1230
1894	2	1011
1895	2	755
1896	2	492
1897	2	1184
1898	2	601
1899	2	1317
1900	2	1121
1901	2	1048
1902	2	997
1903	2	594
1904	2	715
1905	2	847
1906	2	594
1907	2	659
1908	2	529
1909	2	513
1910	2	519
1912	2	399
1912	2	639
1913	1	33

(Heads of Branches only - Section 10 of The Railway Service Appeal Board Act 1903)

1914	2	723
1915	2	973
1916	2	727
1917	2	1193
1918	2	1199
1919	2	1293
1920	2	1251
1921	2	801
1922	2	1175
1923	2	1077
1924	2	1093
1925	2	1175
1926	2	1205
1927	2	727
1928	2	817
1929	2	905
1930	2	421
1931	2	445
1932	2	197
1933	2	369
1934	2	729
1935	2	445
1936	2	713
1937	2	1069 (Last list published under Section 26, Act 414/1887)



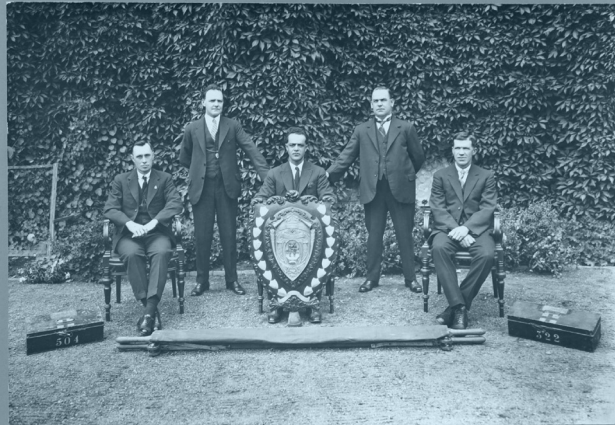
**South Australian Government Gazette
List of Railway Employees
Published pursuant to Section 36
of the South Australian Railways Commissioners act no. 2303 of 1936**

Year	Volume	Page number
1938	2	639 (First list published pursuant to the new Act No. 2303 of 1936.)
1939	2	1033
1940	2	635
1941	2	399
1942	2	1181
1943	2	619 (This was the last year in which the List of Railway Employees was published.)

*Information prepared by John A Newell, 2010
Revised by MH Thompson, NRM, 2011)*



S. A. R. GHABBE SHIELD, 1927.
= WON BY ADELAIDE TEAM. =



L. GUBBY. F. T. WINTER.
A. MURBEY. W. H. FRASER. H. R. HIBB.
(Leader)



**3 State Records Office
115 Cavan Road, Cavan
Telephone: 8343 6800**

NOTE: Please contact an officer of the State Records Office, who can assist you with your enquiry.



- 3.1 Reference GRG 42/131
Staff Register
1853 - 1913 -- 11 volumes
Gives name, date of birth, date of entering service, station, position, reason for change of position, awards, punishments and special leave of absence, authority of employment, rate of pay and house rental.
- 3.2 Reference GRG 42/73
Register of Appointments Confirmed
1889 - 1926 -- 1 volume
Gives name. Date of birth, date of appointment, position, where stationed, date of probationary appointment, date appointment confirmed, rate of pay, insurer and amount of insurance.
- 3.3 Reference GRS 116
Classified List of officers and employees
1889 - 1943 -- 10 volumes
Gives name, occupation and where stationed. Arranged chronologically and then by Branch and Section.
- 3.4 Reference GRS 1427/1
Staff History Cards
1907 - 1961
Gives name, number, position, date of birth, branch and occupation. Arranged alphabetically.
- 3.5 Reference GRG 78/10
Colonial Surgeon's Medical reports on Public Employees
1878 - 1896 - 1 Volume
Includes entries for injured or sick Railway employees. The record gives date of examination, name, and short report on health and generally whether fit for service. Gives some clue as to occupation.

**Other Records relating to South Australian Railways employees -
Period 1873 to 1969**

NOTE: These records relating mainly to SAR employees including apprenticeships and other agreements.

- 3.6 GRS 87 Record of officers with annual salary and leave Period 1911 - 1913.
- 3.7 GRS 88 Record of railway employees, A to L only: Period 1882 to 1885.
- 3.8 GRS 89 Appointment Record Books: Period 1945 to 1965.
- 3.9 GRS 90 Record of classified officers, temporary employees, non-classified officers and cadets of the SAR and Tramways 1873 to 1889.
- 3.10 GRS 91 Appointments and Transfers: Period 1917 to 1963.
- 3.11 GRS 96 Register of applicants eligible for clerical appointments under Regulation 56: -- 1935 to 1958.
- 3.12 GRS 97 Register of applicants eligible for appointment under Regulation No. 26 -- 1925 to 1940.
- 3.13 GRS 98 Register of Appointments 1952 to 1966.
- 3.14 GRS 112 Record of assurance cases of employees on active service, which have special features, with addresses of relatives: Period 1914 to 1920.
- 3.15 GRS 114 Record of officers in the Engineering Department: circa 1889 to 1924.

- 3.16 GRS 115 Chronological list of agreements concerning issues such as apprenticeships, retirements, leases, leases of railway cottages, and memoranda of transfers: Period 1927 to 1957.
- 3.17 GRS 188 Irregularities (offences) of employees of the SAR: Period 1921 to 1952.
- 3.18 GRS 231 Luggage Porters' licences at Adelaide Railway Station: Period 1922 to 1960.
- 3.19 GRS 281 Index to Indenture of Apprenticeship: Period 1935 to 1969.
- 3.20 GRS 6232 Record of Employees' War Service: covers both World Wars.
- 3.21 GRS 10638 Record of employment sheets - South Australian Railways circa 1880 to 1976.

NOTE: The Adelaide Office of the Federal Government National Archives has transferred a number of records of the South Australian Railways and the Commonwealth Railways to the State Records Office. The staff of the State Records Office can assist you concerning these records.

NRM Contact:
Moana Colmer
Curator
curator@natrailmuseum.org.au
T 08 8341 1690
PO Box 3153
Port Adelaide SA 5015

This brochure was created by the volunteers and staff of the National Railway Museum. The Museum is a self-funded, not-for-profit organisation. We appreciate the support of our volunteers, members and visitors, and gratefully accept donations and bequests. The Museum holds *Endorsement as a deductible gift recipient* and can provide a tax receipt for donations of \$2 or more.

All images from the NRM Collection, copyright NRM 2011

